



first
national
REAL ESTATE

Mark Gunther



320 Lowes Road Healesville VIC

2 2 4

Discover a rare sanctuary set on approximately 10 acres of absolute privacy, embraced by serene natural bushland. This stunning property offers a peaceful escape, surrounded by open, cleared land dotted with beautiful trees where native fauna such as lyrebirds, wombats, and wallabies come to visit. Breathtaking flora and surrounding bushland add to the captivating landscape that awaits at your doorstep.

Crafted from exquisite sandstone, the retreat's grand entrance reveals a towering cathedral ceiling, natural light through clerestory and leadlight windows, and striking timber poles that add a warm, rustic charm to the open-plan living and kitchen area.

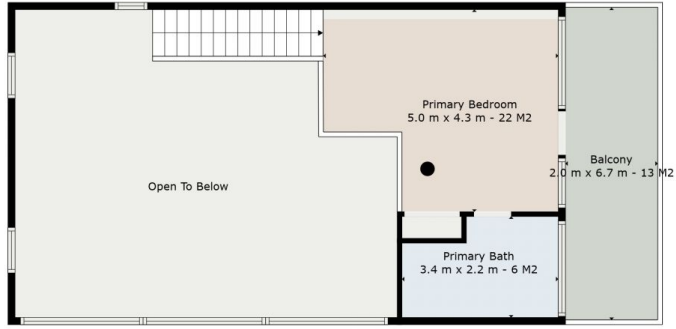
Type : House
Price : \$ 920,000
Land Size : 10 Acres
View : <https://www.markgunther.com.au/sale/vic/yarradandenong-ranges/healesville/residential/house/8241609>



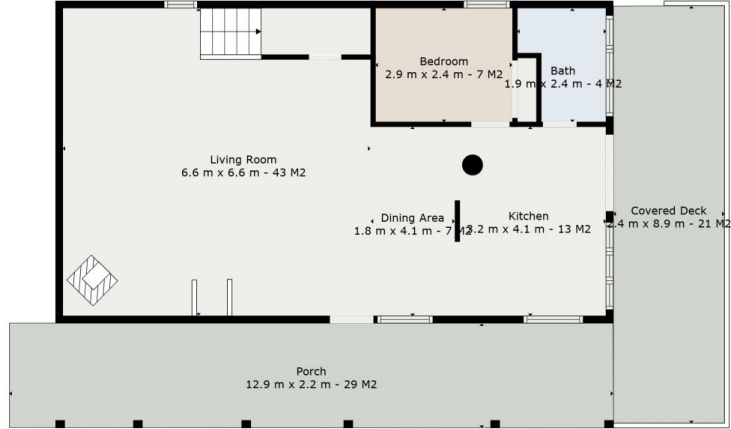
Mark Gunther
03 5962 3030

[For full version visit the website](https://www.markgunther.com.au)

<https://www.markgunther.com.au>



Floor 2



Floor 1

TOTAL: 107 m2

FLOOR 1: 77 m2, FLOOR 2: 30 m2

EXCLUDED AREAS: PORCH: 29 m2, COVERED DECK: 21 m2, OPEN TO BELOW: 46 m2,
BALCONY: 13 m2, LOW CEILING: 1 m2

Floor Plan Created By Cubicasa App. Measurements Deemed Highly Reliable But Not Guaranteed.